

VISIONEERING STUDIOS

From vision to groundbreaking and beyond

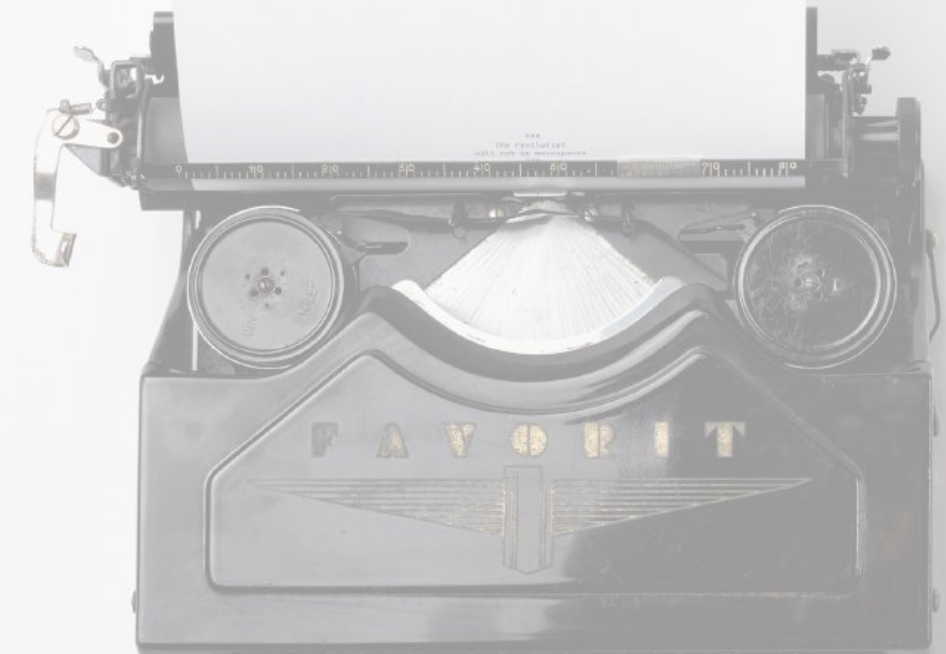
Our team of architects, designers, and builders have helped thousands of churches, non-profits, schools, and businesses get from their first dreams to ribbon-cutting.



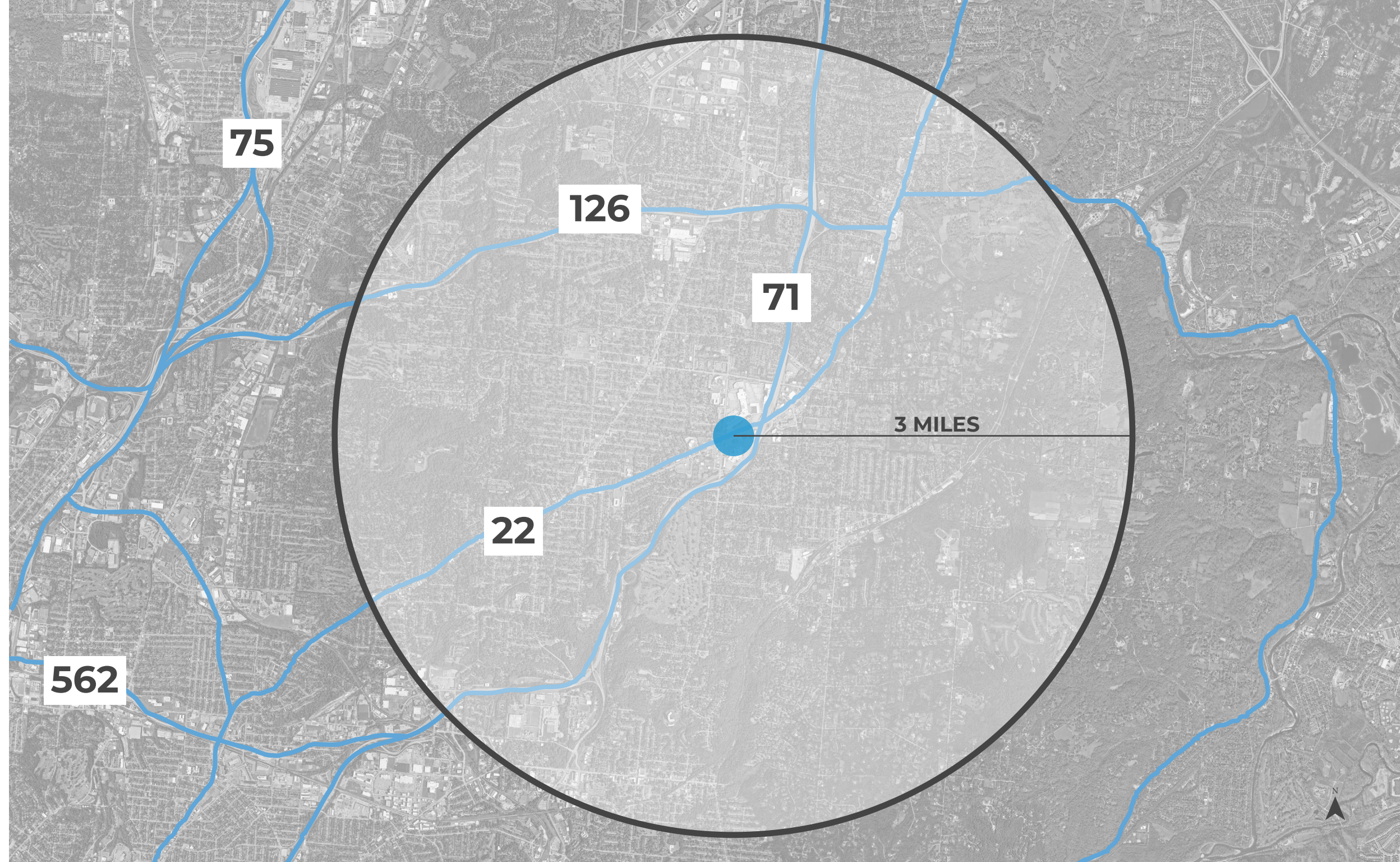
It all starts with **story...**

Good Shepherd Lutheran Church

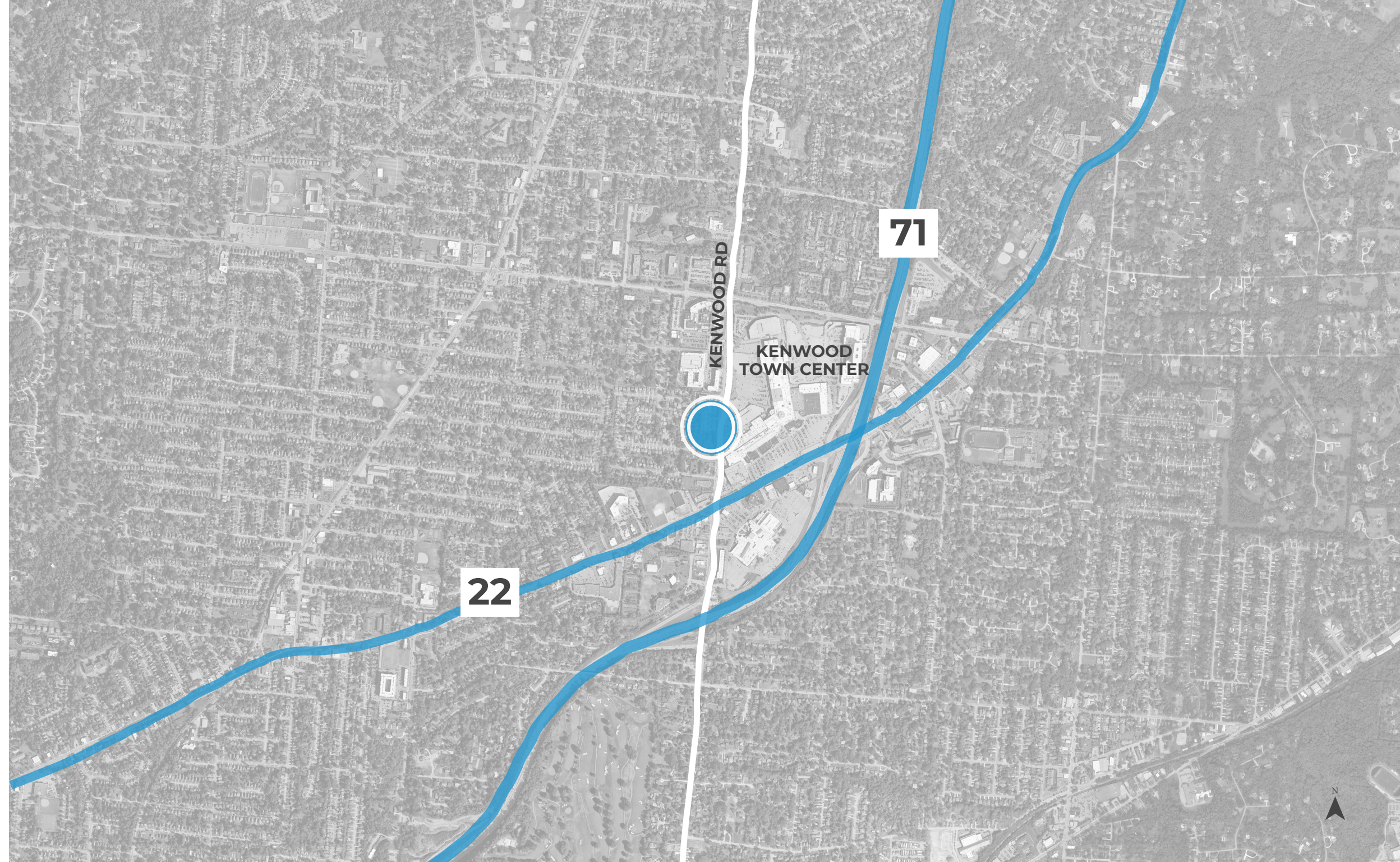
CINCINNATI, OH



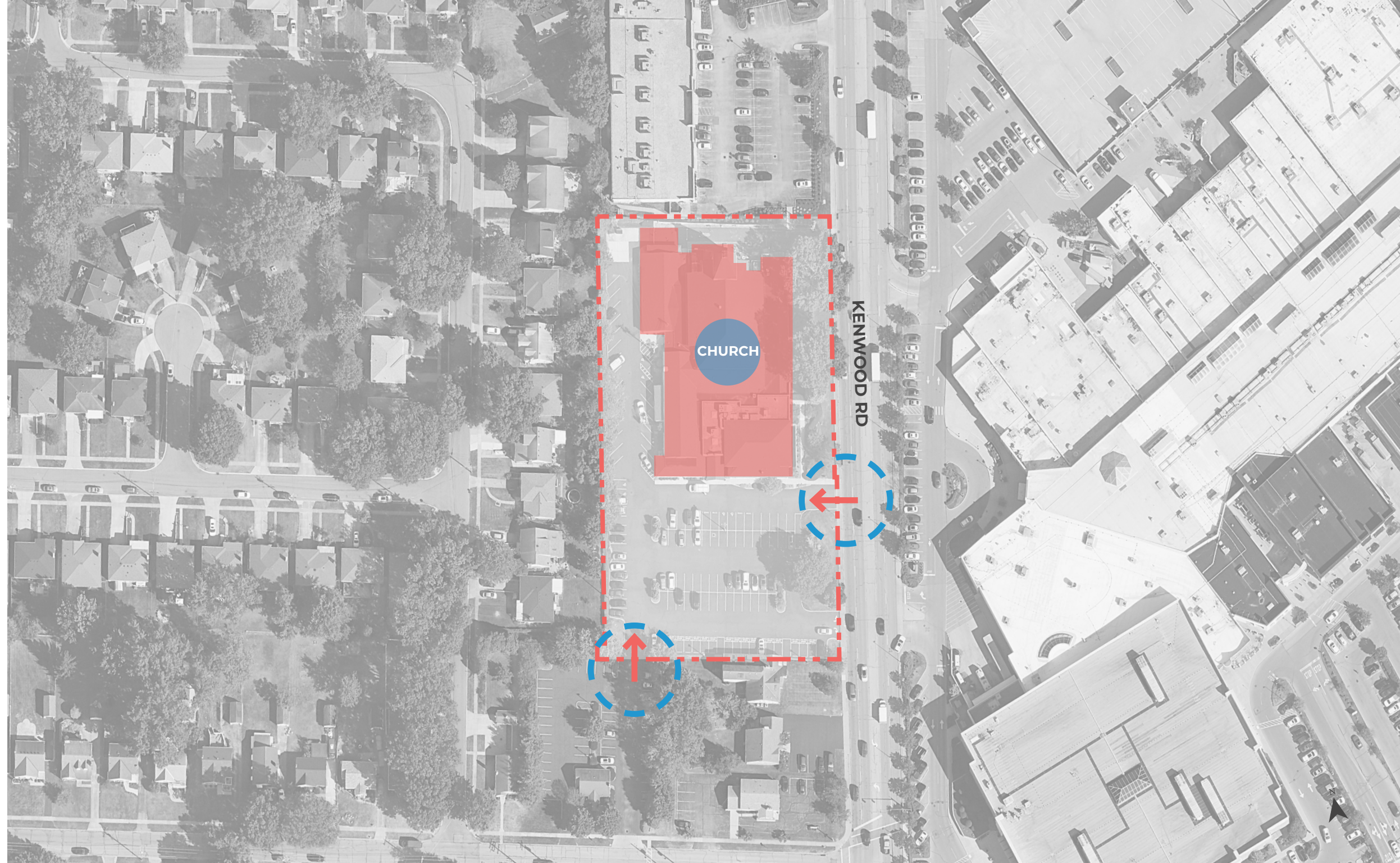
Site Diagram



Site Diagram



Site Diagram



Master Site Plan



Master Site Plan

- 1. Worship center
- 2. Offices
- 3. Social Fellowship
- 4. Lobby Lounge
- 5. Parking
- 6. Social Cafe
- 7. Indoor Play
- 8. Kids Ministry



Character & Style

A clean new look to traditional forms.



Photos By Others.



Photos By Others.



Before

Existing Entry



After

Expanded Front Porch



After



Before

Kenwood Corner View



After

Entry Signage





Before



After

Expanded Entry Addition



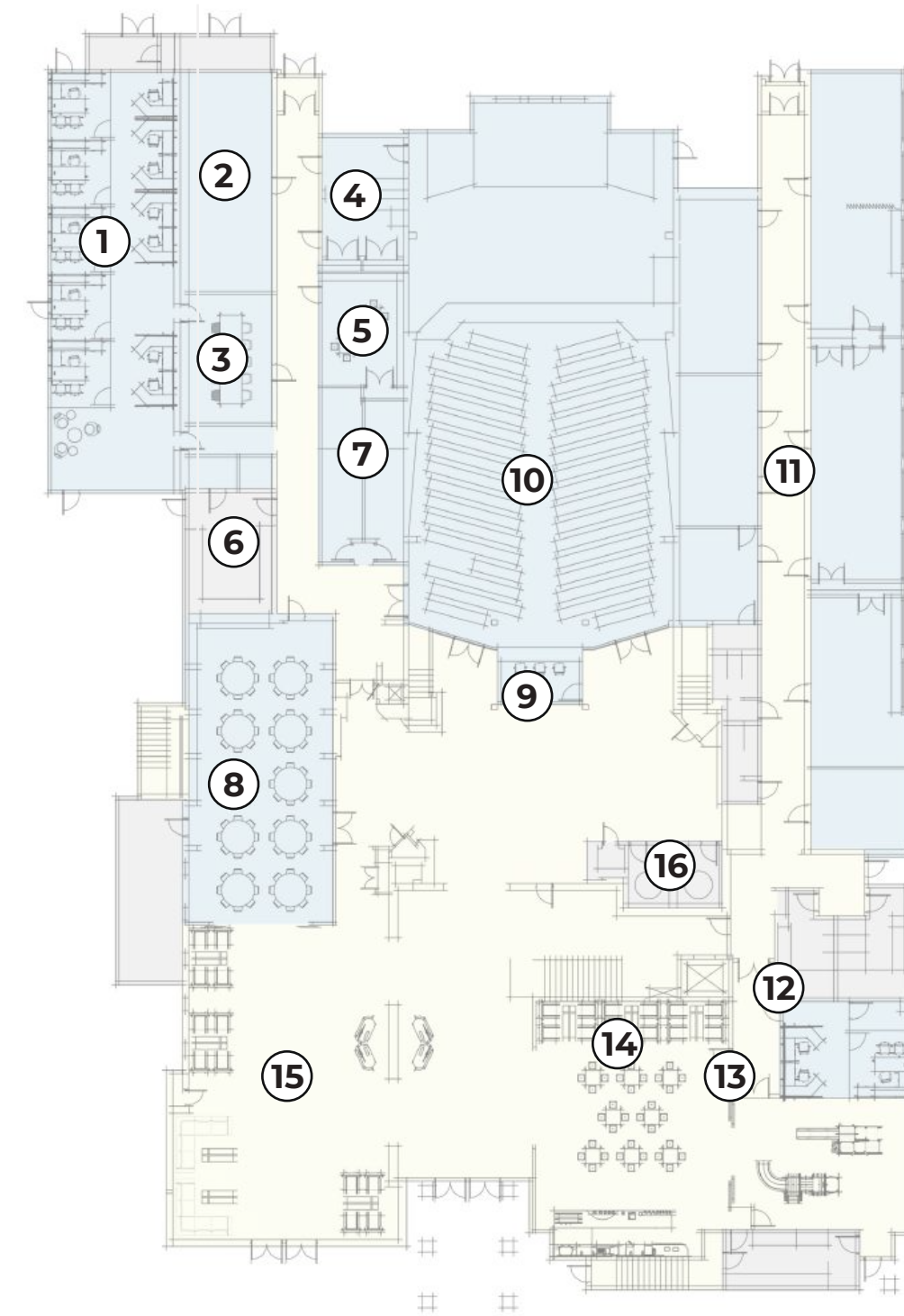
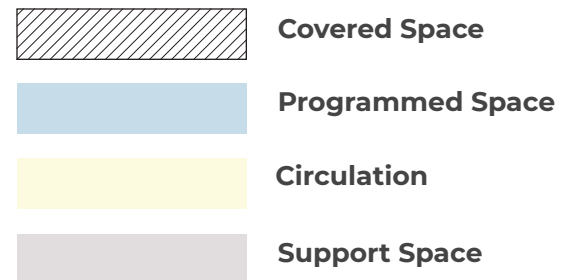
After

Expanded Entry Addition



Concept Plans

1. OFFICES
2. MUSIC ROOM
3. MEETING ROOM
4. SACRISTY
5. MEETING ROOM / LIBRARY
6. KITCHEN
7. EXPANDED RESTROOMS
8. SOCIAL FELLOWSHIP
9. RELOCATED AV BOOTH
10. WORSHIP CENTER (+/- 350 SEATS)
11. SECURE PRE-K / KIDS MINISTRY
12. PRE-SCHOOL CHECK-IN / OFFICE
13. INDOOR PLAY
14. SOCIAL / CAFE
15. LOBBY LOUNGE
16. ADA RESTROOM UPDATE





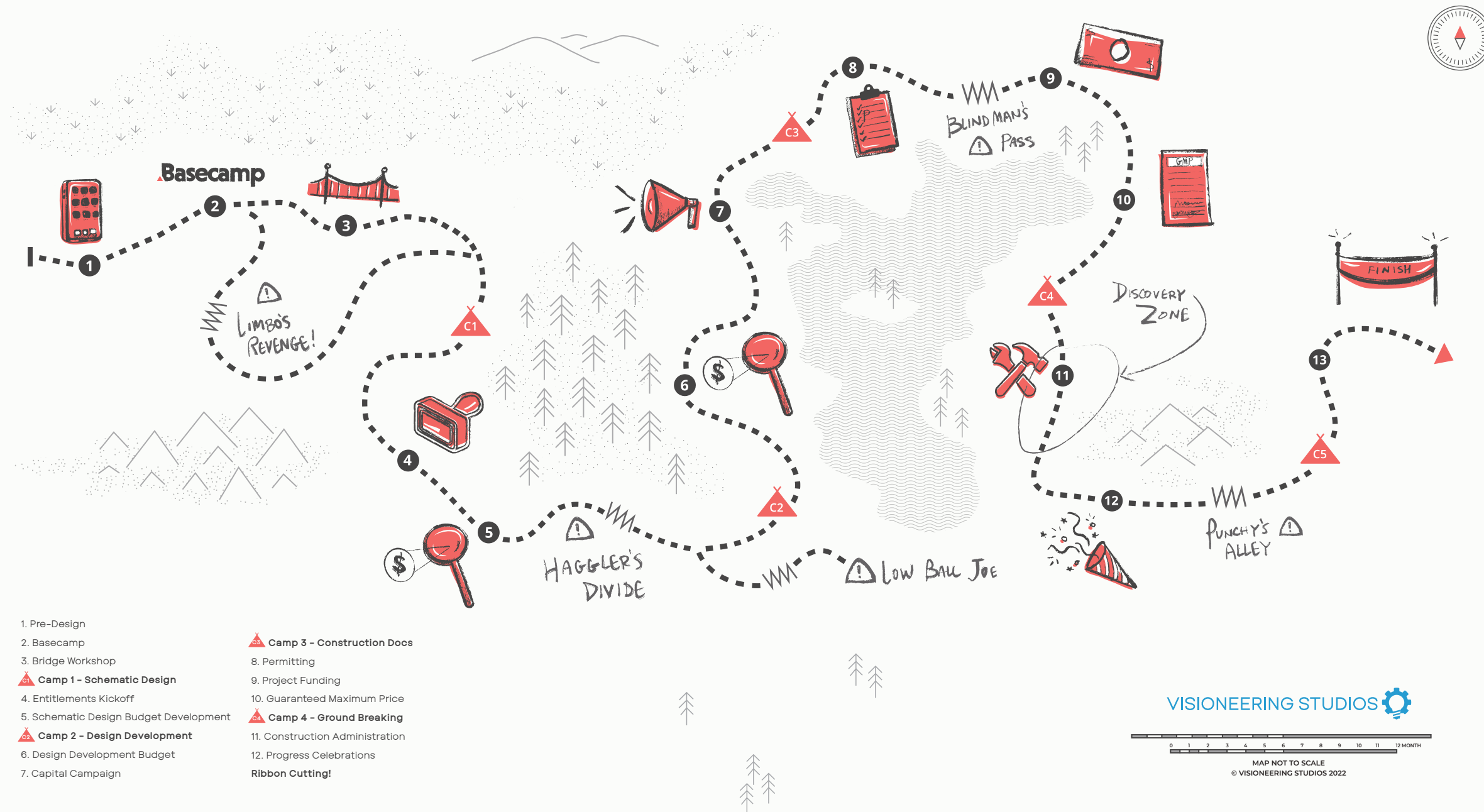
We Are Vioneering

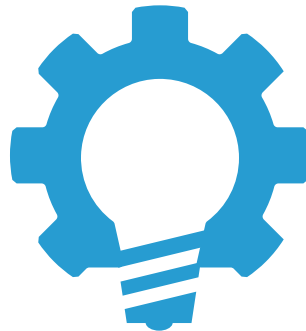
Vioneering Studios offers a suite of “look to launch” services, specializing in nonprofit, worship and commercial environments. From real estate to designing to building, our integrated divisions, national licensure, and collective expertise provide a seamless customer journey to cutting-edge environments.

[VIONEERINGSTUDIOS.COM](https://vioneeringstudios.com)

VIONEERING STUDIOS ARCHITECTURE
IRVINE, CA - MARINERS CHURCH

Expedition Guide





Copyright © 2021 Visioneering Studios Architecture, Inc. All Rights Reserved and their use and publication shall be restricted to the original site for which they were prepared. Re-use reproductions or publications by any method, in whole or in part, is prohibited except by written permission from the Architect. Title to these plans and or specifications shall remain with the Architect without prejudice and visual contact with them shall constitute Prima Facia evidence of acceptance of these restrictions.